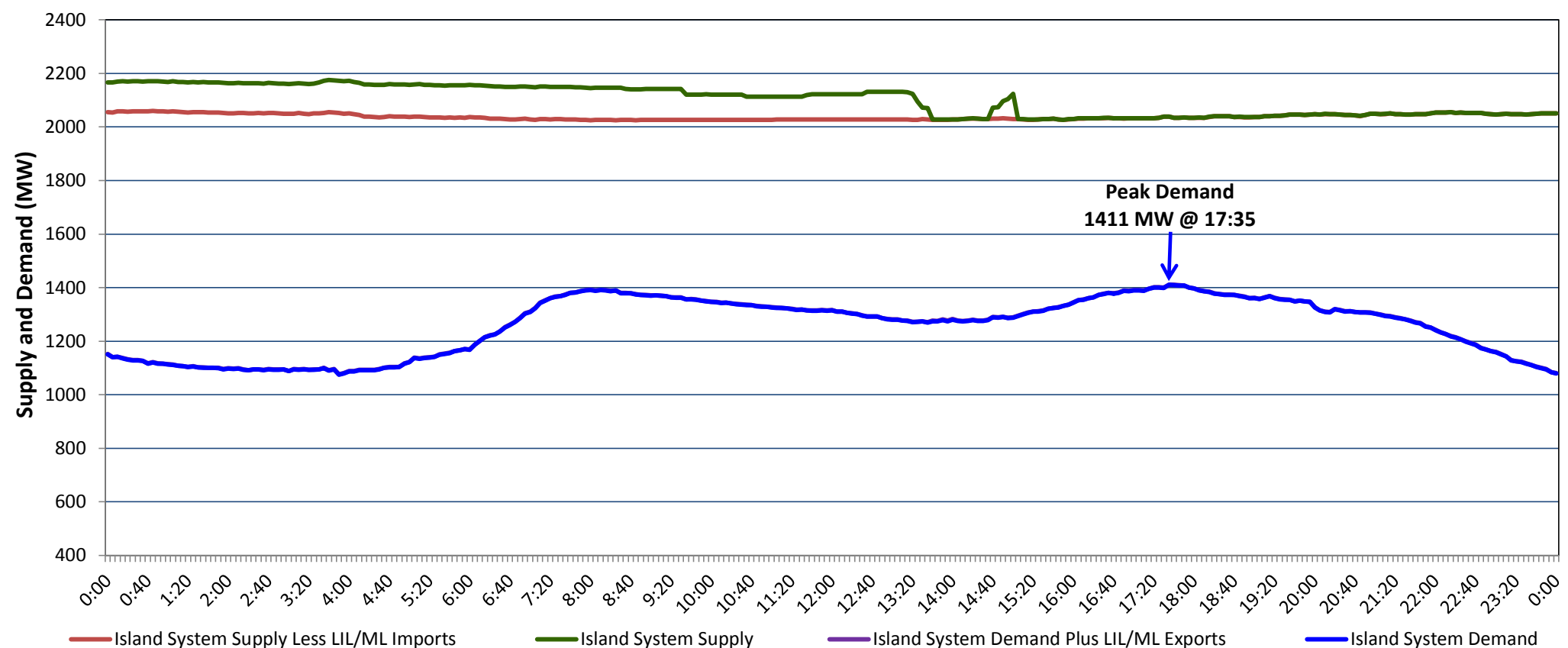


**Newfoundland Labrador Hydro (NLH)
Supply and Demand Status Report Filed Wednesday, February 06, 2019**

**Section 1
Island Interconnected System Supply, Demand & Exports
Actual 24 Hour System Performance For Tuesday, February 05, 2019**



Supply Notes For February 05, 2019

1,2

A As of 1513 hours, February 04, 2019, Paradise River Unit unavailable due to planned outage (8 MW).

**Section 2
Island Interconnected Supply and Demand**

Wed, Feb 06, 2019	Island System Outlook ³			Seven-Day Forecast	Temperature (°C)		Island System Daily Peak Demand (MW)	
					Morning	Evening	Forecast	Adjusted ⁷
Available Island System Supply: ⁵	2,030	MW		Wednesday, February 06, 2019	4	-4	1,410	1,308
NLH Island Generation: ⁴	1,685	MW		Thursday, February 07, 2019	-5	-4	1,455	1,352
NLH Island Power Purchases: ⁶	140	MW		Friday, February 08, 2019	-6	-2	1,470	1,367
Other Island Generation:	205	MW		Saturday, February 09, 2019	6	-5	1,510	1,407
ML/LIL Imports:	-	MW		Sunday, February 10, 2019	-7	-8	1,580	1,476
Current St. John's Temperature & Windchill:	5 °C	N/A	°C	Monday, February 11, 2019	-10	-8	1,645	1,540
7-Day Island Peak Demand Forecast:	1,645	MW		Tuesday, February 12, 2019	-11	-7	1,630	1,525

Supply Notes For February 06, 2019

3

- Notes:
1. Generation outages for running and corrective maintenance are included. These are not unusual for power system operations. They generally do not impact customer supply. The power system operators schedule outages to system equipment whenever possible to coincide with periods when customer demands are low and sufficient supply reserves are available. However, from time to time equipment outages are necessary and reserves may be impacted.
 2. Due to the Island system having no synchronous connections to the larger North American grid, when there is a sudden loss of large generating units there may be a requirement for some customer's load to be interrupted for short periods to bring generation output equal to customer demand. This automatic action of power system protection, referred to as under frequency load shedding (UFLS), is necessary to ensure the integrity and reliability of system equipment. Under frequency events have typically occurred 5 to 8 times per year on the Island Interconnected System and the resultant customer load interruptions are generally less than 30 minutes. With the activation of the Maritime Link frequency controller during the winter of 2018, UFLS events have occurred less frequently.
 3. As of 0800 Hours.
 4. Gross output including station service at Holyrood (24.5 MW) and improved NLH hydraulic output due to water levels (35 MW).
 5. Gross output from all Island sources (including Note 4).
 6. NLH Island Power Purchases include: CBPP Co-Gen, Nalcor Exploits, Rattle Brook, Star Lake, Wind Generation and capacity assistance (when applicable).
 7. Adjusted for curtailable load, market activities and the impact of voltage reduction when applicable.

**Section 3
Island Peak Demand Information
Previous Day Actual Peak and Current Day Forecast Peak**

Tue, Feb 05, 2019	Actual Island Peak Demand ⁸	17:35	1,411 MW
Wed, Feb 06, 2019	Forecast Island Peak Demand		1,410 MW

Notes: 8. Island Demand / LIL / ML Exports (where applicable) is supplied by NLH generation and purchases, plus generation owned and operated by Newfoundland Power and Corner Brook Pulp & Paper (Deer Lake Power, DLP).